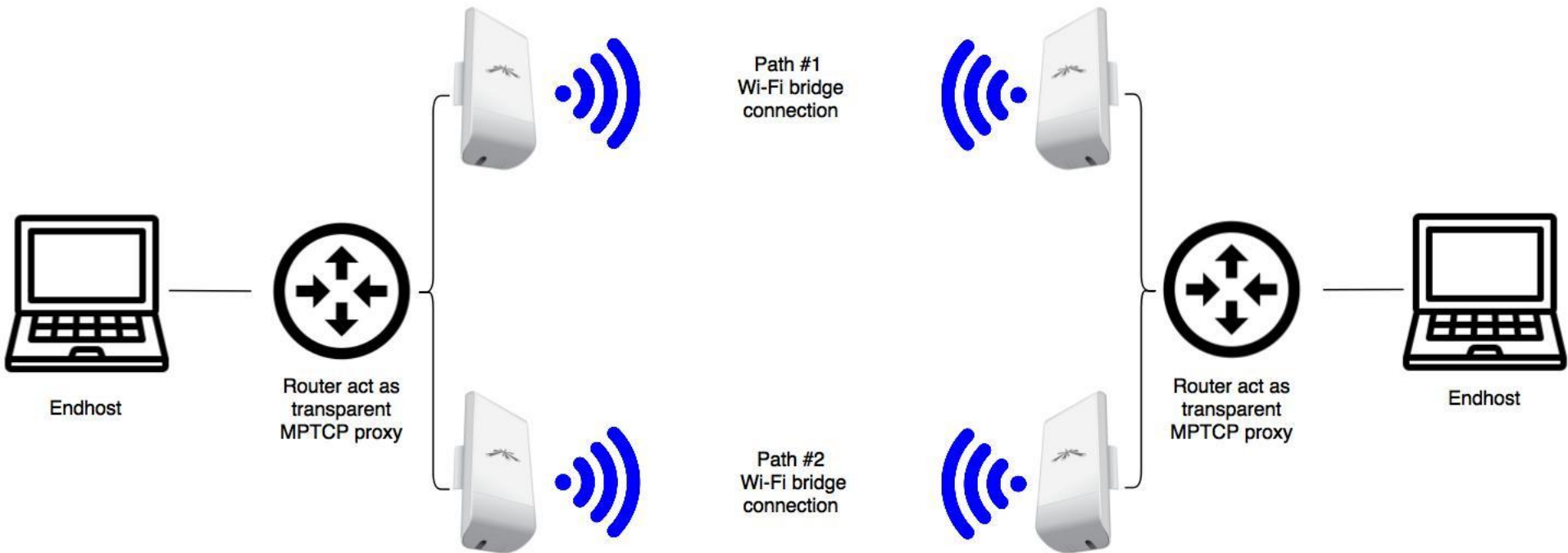
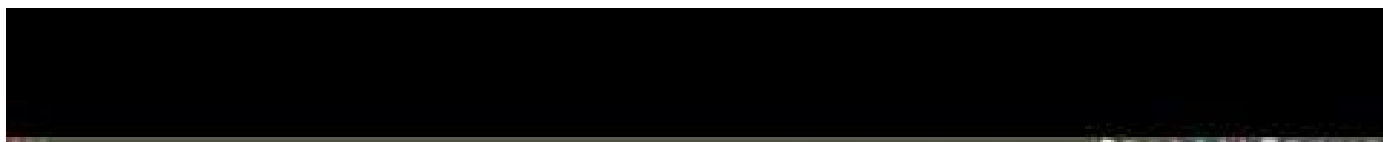


MultipathTCP

Double the speed of the link

Topology





```

Connecting to host 192.168.70.147, port 5201
Reverse mode, remote host 192.168.70.147 is sending
[ 4] local 192.168.78.209 port 45238 connected to 192.168.
70.147 port 5201
[ ID] Interval          Transfer      Bandwidth
[ 4]  0.00-1.00   sec  4.74 MBytes  39.7 Mbits/sec

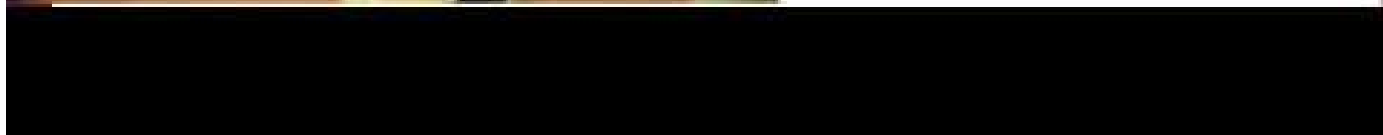
```



```

ytes  39.9 Mbits/sec
ytes  40.8 Mbits/sec
ytes  40.6 Mbits/sec
ytes  42.4 Mbits/sec

```



TODO

- Stuck at 1 CPU core
- Reuse option in SS for multiple cores
- Kernel package ex:
kernel-mptcp_4.4.56-1-b2f20a_ar71xx.ipk
- Sell a box!
- PROFIT!

Links

- <https://www.youtube.com/watch?v=1xQQuT9BGul>
- <https://blog.freifunk.net/2017/08/28/gsoc-2017-add-mptcp-support-ledeopenwrt-trunk-final/>
- <https://github.com/spyff/lede-mptcp>
- <https://github.com/spyff/shadowsocks-libev-nocrypto>
- EOF!